

# **Batch Upgrading Software**

## **User Manual**

UD.6L0202D1294A01

Thank you for purchasing our product. This manual applies to Batch Upgrading software, please read it carefully for the better use of this software. The contents in this manual are subject to change without notice.

## Contents

Chapter 1 Introduction.....	3
1.1 Overview .....	3
1.2 System Requirements.....	3
1.3 Conventions.....	3
1.4 Version Information .....	3
Chapter 2 Searching and Adding Devices.....	4
2.1 Adding Online Device .....	4
2.2 Adding by IP Address.....	5
2.3 Importing from Client.....	6
Chapter 3 Upgrading Devices .....	7

## Chapter 1 Introduction

### 1.1 Overview

The Batch Upgrading software can be used to upgrade one or many devices and display the version information of devices. You can add devices for upgrading by searching online devices or by IP address. And the software provides three upgrade methods, including upgrade by file, upgrade by directory and upgrade by package.

### 1.2 System Requirements

**Operating System:** Microsoft Windows 7 / Windows 2008 32 / 64-bit  
Windows XP / Windows 2003 32-bit

**CPU:** Intel Pentium IV @ 3.0 GHz or above

**RAM:** 1G or above

**Video Card:** RADEON X700 Series

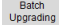
**Display:** 1024\*768 resolution or above

### 1.3 Conventions

In order to simplify the description, we define the “Batch Upgrading software” as “software” in the following chapters.

### 1.4 Version Information



After installing the software, run the software and click  on the control panel to enter the Batch Upgrading interface.


Click the **Help > About** tab at the top to view the version information or click **Help > User Manual** and get the User Manual of the software.

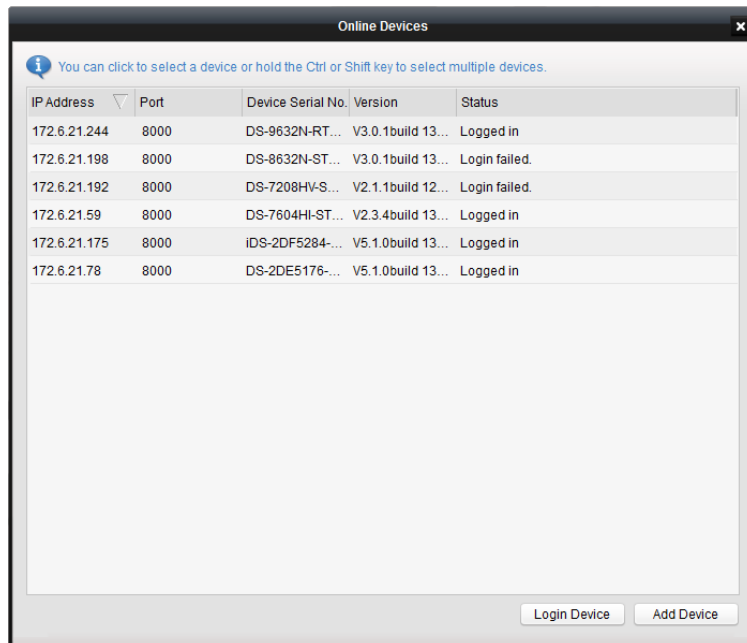
## Chapter 2 Searching and Adding Devices


The software provides two ways for searching the devices. You can search the active online devices within your subnet or search devices by IP address.

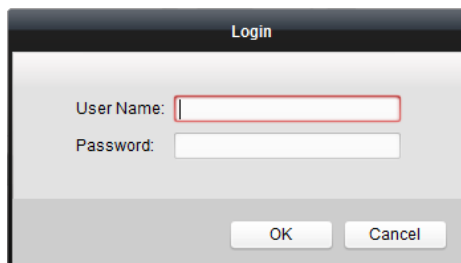
### 2.1 Adding Online Device

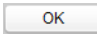

**Steps:**

1. On the Batching Upgrading interface, click  **Online Devices** and the Online Devices interface pops up. The active online devices within the same subnet with that of the software will be displayed in the list.




2. You can click to select a device or hold the Ctrl or Shift key to select multiple devices, and then click  **Login Device** to pop up the Login dialog box.




3. Enter the user name and password, and click  **OK** to save the settings.
4. Click to select a device or hold the Ctrl or Shift key to select multiple devices, and click  **Add Device** to add the device(s) to the upgrading device list.

**Note:** You have to login the device before adding it to the device list.

5. Click  to exit the Online Devices interface.

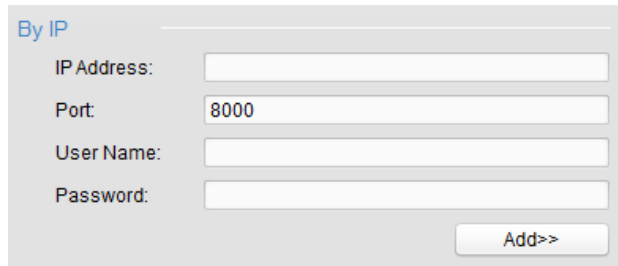
## 2.2 Adding by IP Address



Click  Manual to enter the Search device interface.

### Task 1: Search by Specified IP Address

**Steps:**

1. In the *By IP* panel, enter the IP address, port, user name and password of the device.



2. Click  to add the device to the upgrading device list for upgrading.
3. Click  to exit the Search device interface.

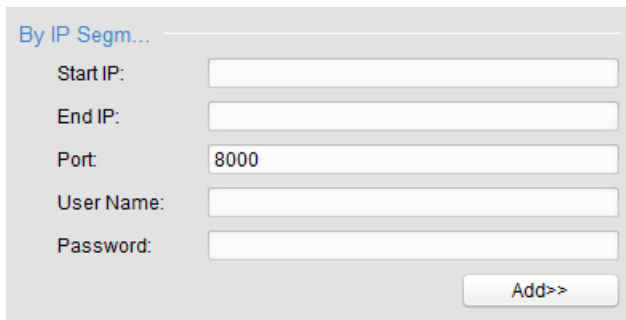
### Task 2: Search by Network Segment

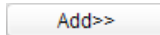
**Purpose:**

You can search and add many the devices whose IP addresses are between the start IP address and end IP address.

**Steps:**

1. In the search *By IP Segment* panel, enter the start IP address, end IP address, port, user name and password for searching the eligible device(s).



2. Click  to search and add the devices whose IP addresses are between the start IP address and end IP address, to the upgrading device list.

**Note:** You cannot add the device(s) to the upgrading device list if the username, password or port is incorrect.

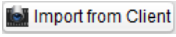
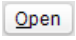
3. Click  to exit the Search device interface.

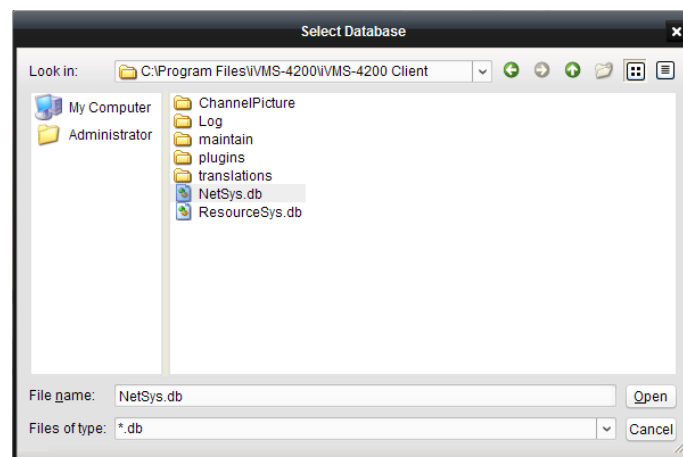
## 2.3 Importing from Client

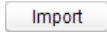

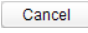
### **Purpose:**

You can also import the information of device resources added to the iVMS-4200 client software.

### **Steps:**

1. Click  and the corresponding interface shows up.
2. Browse to select the config file (NetSys.db).
3. Click  to load the device information.



4. Click  to import the device resources from the iVMS-4200 client software.
5. Click  to add the devices to the upgrading device list.
6. Click  to exit.

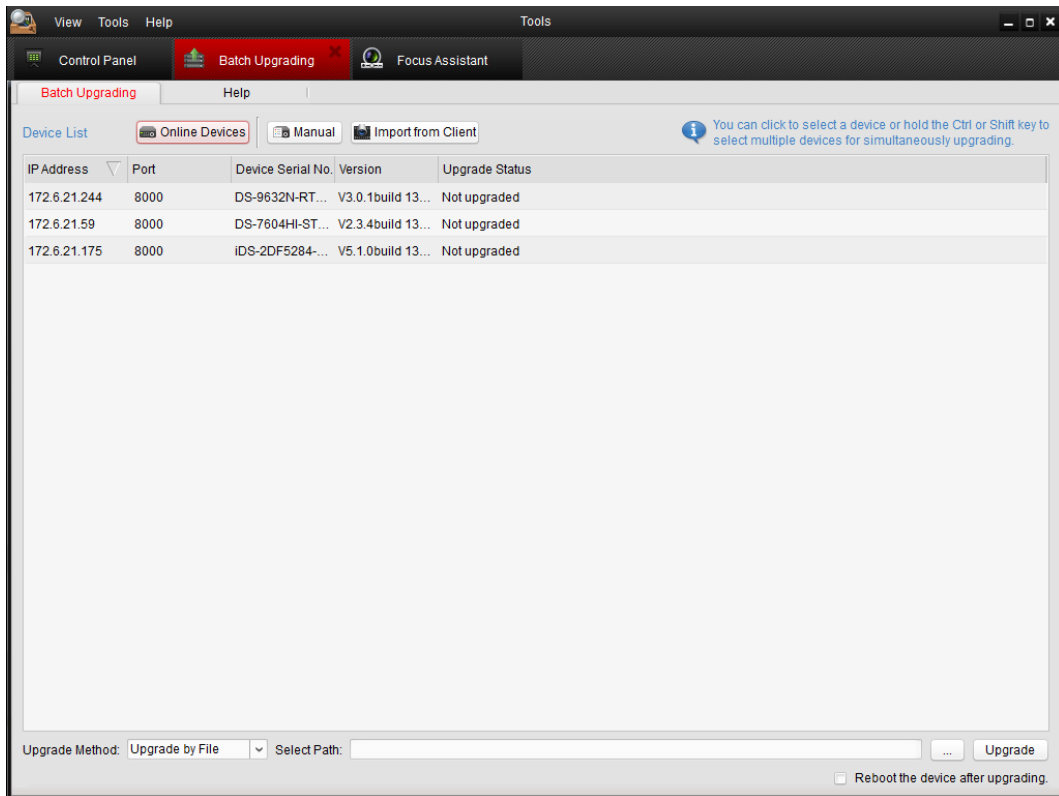
## Chapter 3 Upgrading Devices

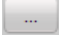
You can upgrade the device by file, by directory or by package.

- Upgrade by file is to select the specific upgrade file for the device(s) to upgrade.
- Upgrade by directory is to choose the directory on which the upgrade file is located; the software can automatically search the matched upgrade file to upgrade the device(s). This method may not supported by some devices.
- Upgrade by package is to select the file in which multiple upgrade files are included; the software can search the file and select the matched upgrade file to upgrade the device(s). This method may not supported by some devices.

### Steps:

1. Click to select a device or hold the Ctrl or Shift key to select multiple devices.



2. Select the upgrade method and click  to choose the upgrade file or the folder which contains upgrade file(s). You can check ☒ checkbox to reboot the device after upgrading and you can also check ☒ checkbox to restore the default settings.

### Notes:

- 1) Upgrade by directory and Upgrade by package may not supported by some devices.
- 2) The **Restore default settings** item will show after you check

☒ Reboot the device after upgrading. checkbox.

3. Click  to start upgrading.

**Note:** Only when the upgrade file is available for the device(s), the upgrading process can proceed.

IP Address	Port	Device Serial No.	Version	Upgrade Status
172.6.21.114	8000	DS-9016HF-RT1620120802BBRR...	V2.2.1build 120720	Not upgraded
172.6.21.187	8000	DS-7204HVI-ST/SE0120110729AA...	V1.3.2build 120815	Not upgraded
172.6.21.129	8000	DS-NVR-V120B20120618-047D7...	V1.2.1build 120618	Not upgraded
172.6.21.222	8000	DS-7316HI-ST1620111229BBWR...	V2.0.3build 120706	Not upgraded
172.6.23.231	8000	DS-7716NI-ST1620120518BBRR...	<div><div></div></div> 33%	Upgrading...
172.6.23.116	8000	DS-9632NI-ST1620110917BBRR...	<div><div></div></div> 5%	Upgrading...

After completely upgrading, you can see the updated version information of the device(s) in the device list.